



Regional Beach Sand Project III

Phase I – Planning Studies

Borders Committee | Item 4
Courtney Becker, Associate Regional Planner
Leslea Meyerhoff, City of San Clemente
Susan Brodeur, Orange County Parks
Friday, July 25, 2025

Shoreline Preservation Working Group

Since 1980's

Over **22 million visitors** per year visit the San Diego region's beach generating over **\$2.4 BILLION** per year in beach spending



Regional Beach Sand Projects I & II



2001 – Regional Beach Sand Project

- 2.1 million cubic yards of sand
- Cost \$18 million
- Jurisdiction's paid for Planning
- Engineering, Environmental and Construction
 - 60% Federal Funding & 40% State Funding



2012 – Regional Beach Sand Project II

- 1.5 million cubic yards of sand
- Cost \$26 million
- Jurisdiction's paid for Planning
- Engineering, Environmental and Construction
 - 85% State Funding & 15% Local Funding

Purpose of RBSP III

Regional Shoreline Monitoring Program
est. 1996



Based on the data collected by the Regional Shoreline Monitoring Program

Grandview Street, Leucadia, 2014



Oceanside Blvd, 2014



Grandview Street, Leucadia, 2024



Oceanside Blvd, 2024



The 3 Stages of RBSP III



Phase I
Planning, Feasibility & Economic Analysis



Phase II
Engineering & Environmental



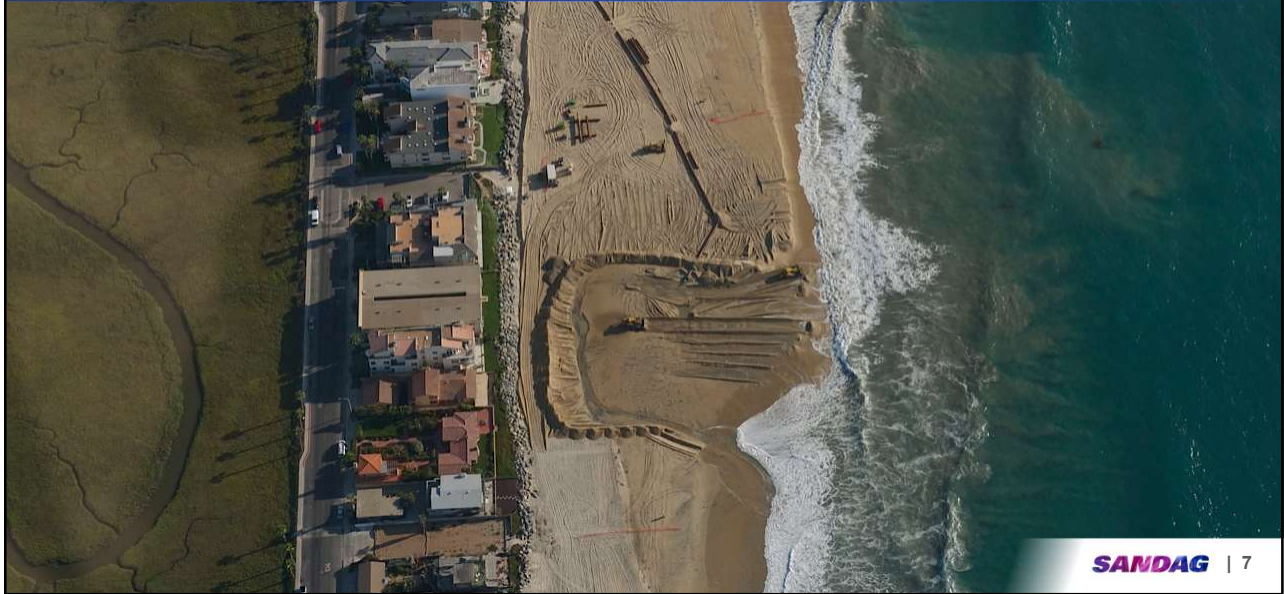
Phase III
Construction & Monitoring

San Diego and South Orange County Littoral Cells

A littoral cell is self-contained compartment with in which sand circulates.



Draft Phase I Report Results



RBSP III Proposed Receiver Sites

San Diego

- 15 Receiver Sites
- 4,303,000 CY

Orange County

- 3 Receiver Sites
- 1,550,000 CY



Economic Analysis Results

Methodology

- Benefit-Cost Analysis = similar to USACE methodology evaluating economic value of projects by comparing their expected cost and benefits.
- Benefit Cost Ratio (BCR) >1 = Cost Effective

Overall results

- RBSP III BCR = 5.7 (San Diego County BCR = 8.1)
- Nourishing 15 beaches in San Diego will generate **\$1.6 billion** over next **10 years**
- Report concludes, ***“There is a need to maintain San Diego’s beaches to sustain its economy.”***

Comments - Prevailing Themes

Revisions to proposed footprints for several beaches

To better align with each jurisdiction's shoreline management goals.

Emphasis on RBSP III moving forward as a programmatic project

Perform a programmatic EIR/EIS to reduce costs and streamline environmental clearances.

Consider the impacts to the lagoons that may occur

Lagoon managers should be involved in the design, sand quantity, and placement

Draft Costs for Construction & Post-Monitoring

Dredge Cost	\$20,400,000
Hard Cost	\$160,186,756
Contingency (35%)	\$63,205,365
Soft Costs	\$5,425,000
Total:	\$260,382,120

Seeking Grant Funding

DBW Grant for Phase II

- Applied for \$5,252,000
- State Budget FY 2027
- If awarded, 15 % required non-state match

US Army Corps of Engineers (USACE): San Diego & Orange County Investigation – to explore inclusion of all beaches into USACE’s existing Coastal Storm Damage Reduction Project’s programmatic efforts

- Water Resource Development Act 2024 authorized work
- SANDAG working to include in USACE work plan
- SANDAG provided a Letter of Intent to be the local sponsor
- MOU with participating cities and SANDAG would be required.

Next Steps

Address Comments & Finalize Report

June – July 2025

Release the Final Report

August 2025

Continue to Seek Funding for Phase 2

August 2025

Southern California Beach Sand Collaborative



Comprised of five entities representing:

- Santa Barbara
- Ventura
- Los Angeles
- Orange County
- City of San Clemente
- San Diego County

Mission

- To collaborate and support beach nourishment efforts as a key adaption strategy to address coastal erosion along Southern California's coast

Meeting Frequency

- Meets quarterly

City of San Clemente

Leslea Meyerhoff, Coastal Administrator

CITY OF SAN CLEMENTE

- City is pleased to be a part of the SANDAG Regional Beach Sand Project III
- City has a critical beach erosion project similar to San Diego County
- Perspective: Regional problems require regional solutions
- Regional collaboration saves significant time, \$\$ and resources for all



City of San Clemente: Beach Erosion

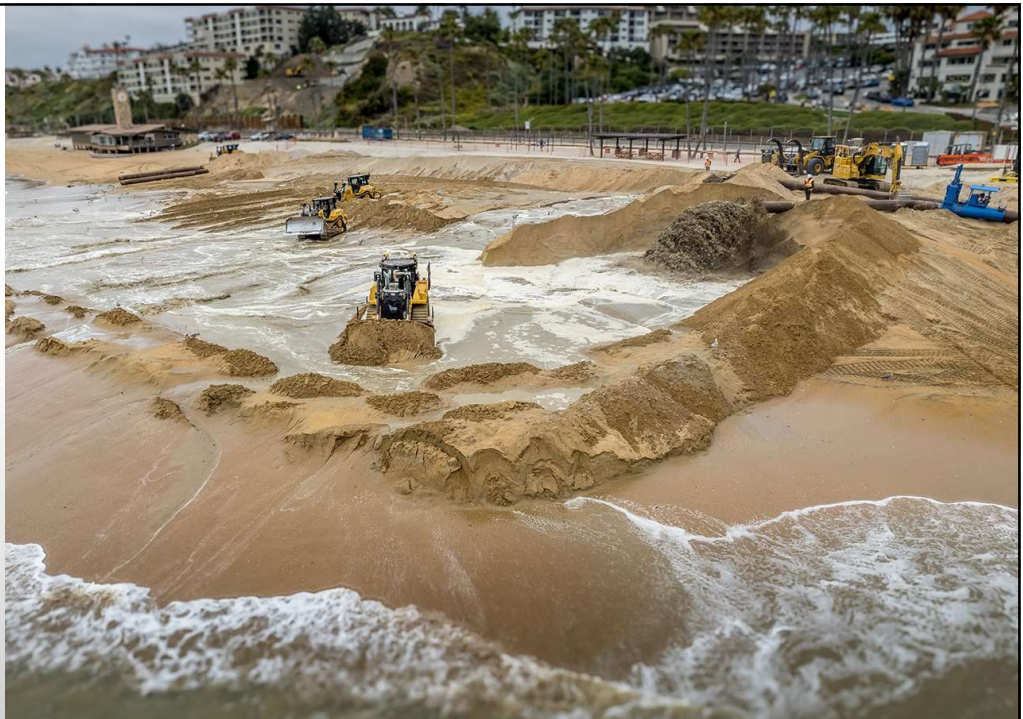


Cottons Point, San Clemente in 2008 vs. 2021.

**San
Clemente
& USACE
& State
Parks**

**Beach Sand
Project**

2024

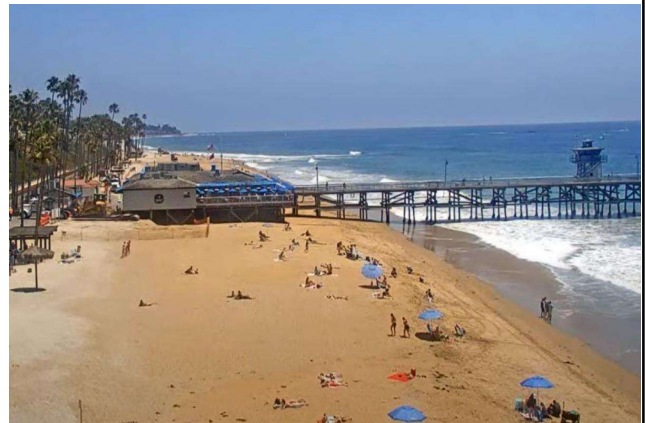




SAN CLEMENTE & USACE 50-YEAR PROJECT



BEFORE



AFTER

RAILROAD ALONG BACK OF BEACH

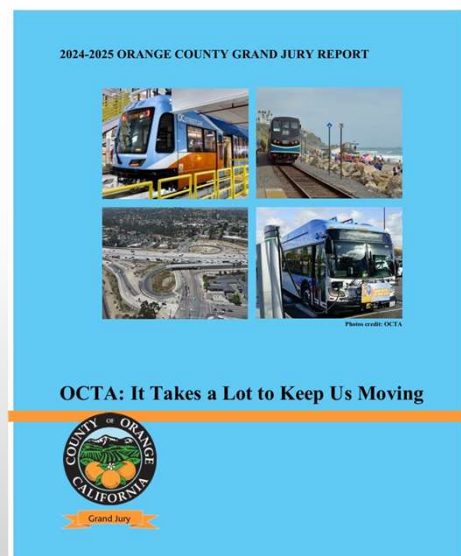
- City is working with OCTA to bring in sand to stabilize tracks
- OCTA railroad is a DOD Strategic Defense Rail Corridor
- Connects to NCTD railroad in San Diego County
- OCTA will bring in 540,00 Cubic Yards of sand
- Place in the northern and southern parts of San Clemente
- Long term solution is sand and sand retention structures



21

2025 ORANGE COUNTY GRAND JURY REPORT

- Report Findings: Page 11
- Only one dredger on the West Coast
- Problematic for beach nourishment
 - Cost and Schedule Implications
- OC Grand Jury Report looked at OCTA sand project
- Dredge availability constrains San Diego County and all of Southern California
- Presents a challenge for all of us working to restore public beaches in California



22

COUNTY OF ORANGE – OC PARKS

- Orange County is also pleased to participate and support the SANDAG Regional Beach Sand Project III
- Sand is a valuable natural resource
- Regional problems require regional solutions
- Regional collaboration maximizes efficiencies and strengthens long-term resilience



SANDAG

Orange County Parks – OC Parks

Susan Brodeur, Coastal Engineer

SOUTH COUNTY BEACH COALITION



- Recommended by the South Orange County Regional Coastal Resilience Strategic Plan
- Adopt a governance structure
- Prioritize future regional efforts:
 - Regional sand management
 - Retention structures
 - Watershed system studies and opportunities

27

Stay connected with SANDAG



Project Manager: Courtney Becker



Email: courtney.becker@sandag.org

Phone: (619) 619-6942



Explore our website
SANDAG.org



Follow us on social media:
@SANDAGregion @SANDAG

SANDAG