



# Regional Reconnecting Communities Study

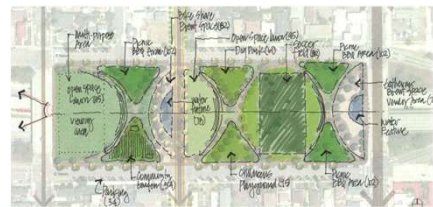
## Overview

Sustainable Communities Working Group | Item 6  
Lizzy Havey, Regional Planner  
Santiago Bustamante, Regional Planner  
September 18, 2025

1

### Regional Reconnecting Communities Study

*Define and identify project opportunities and strategies that will reconnect communities divided by harmful transportation infrastructure.*



2

## Study Overview and Tasks

Funded by a Caltrans Planning Grant

1. Data Analytics
2. Existing Conditions and Study Areas
3. Outreach and Engagement
4. Best Practices
5. Implementation Strategies and Solutions
6. Draft and Final Report

3

## Recap from Social Equity Working Group Meetings



What is Reconnecting Communities



Understanding Disconnected Communities



Proposed Data Sources

4

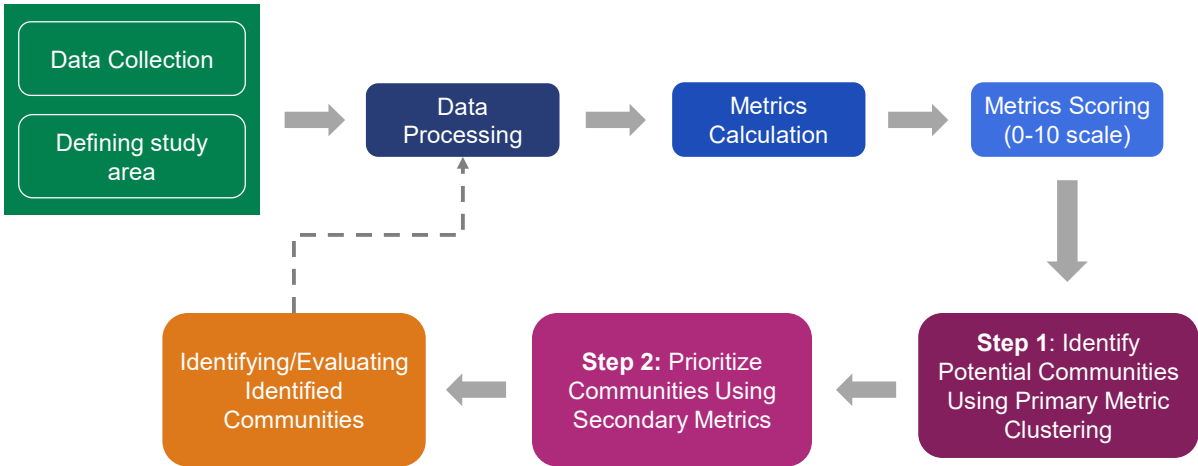
## Disconnected Community Defined

Low-income communities that were physically separated and/or displaced by transportation infrastructure such as highways and railways that created barriers to access and opportunities such as work, education, open spaces, medical services, and retail further burdened by safety, health, and mobility impacts and historical disinvestment.

## Analysis Metrics

Metric	Description
Accessibility	Accessibility to work, education, retail, medical services, open spaces
Mobility	Frequency of short trips (less than 1 mile)
Environmental Health Impacts	Exposure to pollutants
Disinvestment	Building patterns
Safety Impacts	Transportation-related fatalities and crashes
Low-Income	2022 SANDAG Household Estimates

# Overview of Methodology



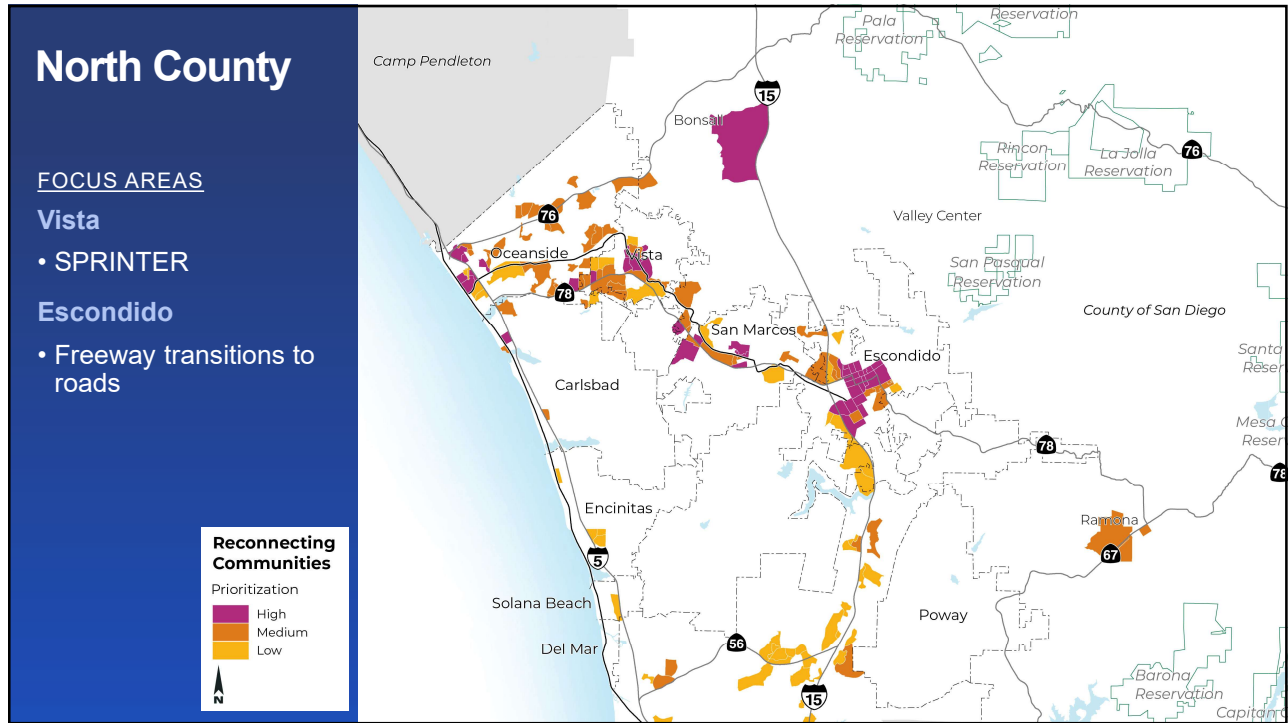
7

## Best Practices Research

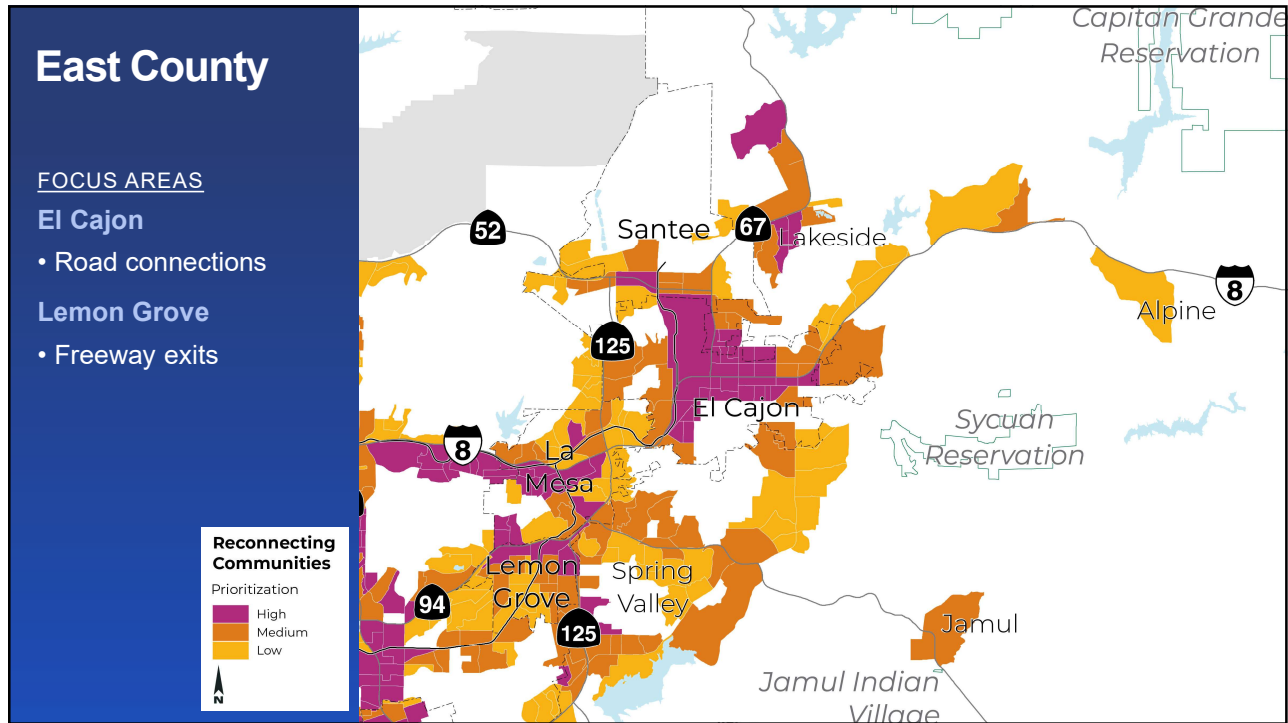
*Highlights best practices from successful national case studies for completed projects*



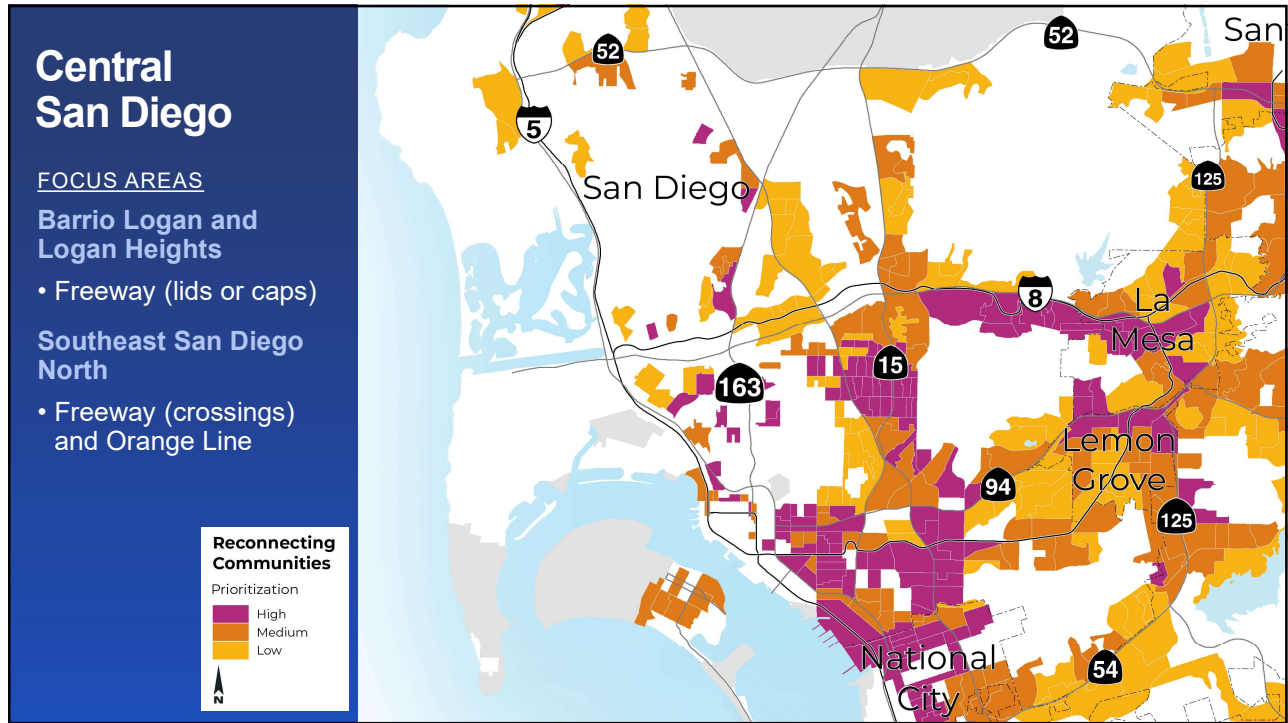
8



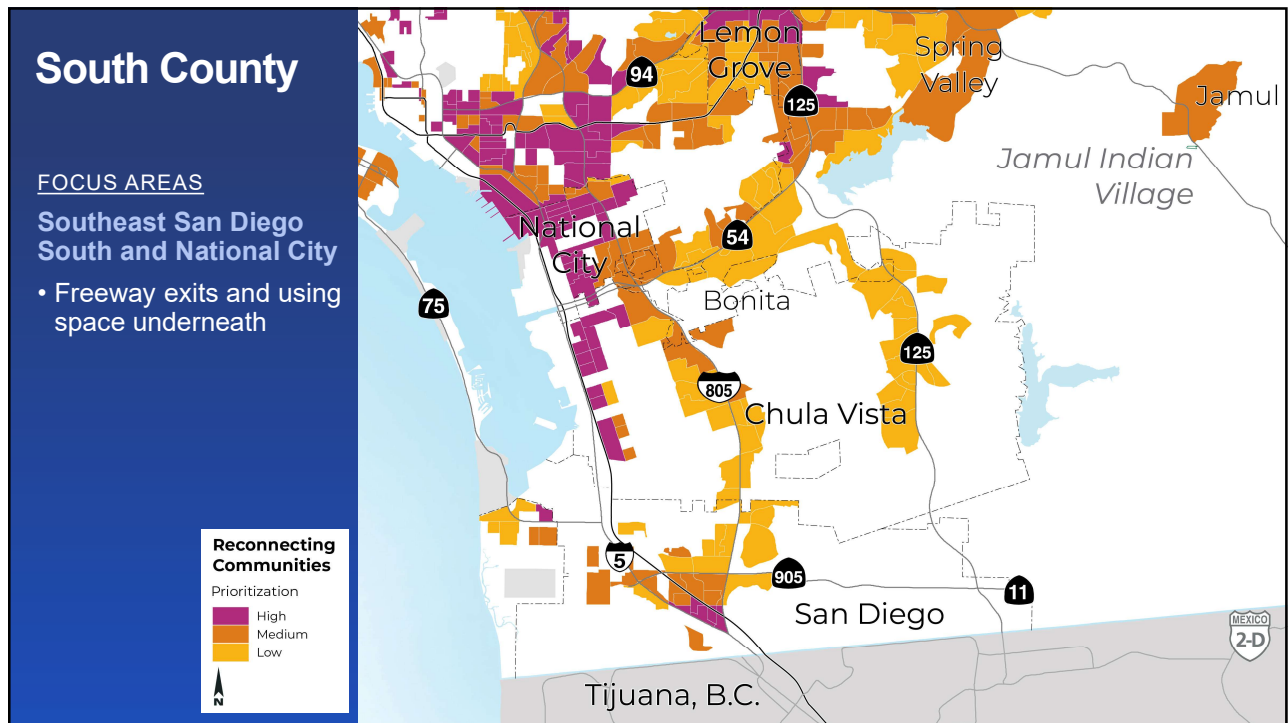
9



10



11



12

# National City

*Opportunities: Activate land underneath transportation infrastructure, bike paths, road diets, Safe routes to schools (SRTS)*

**Barrier: I-805**

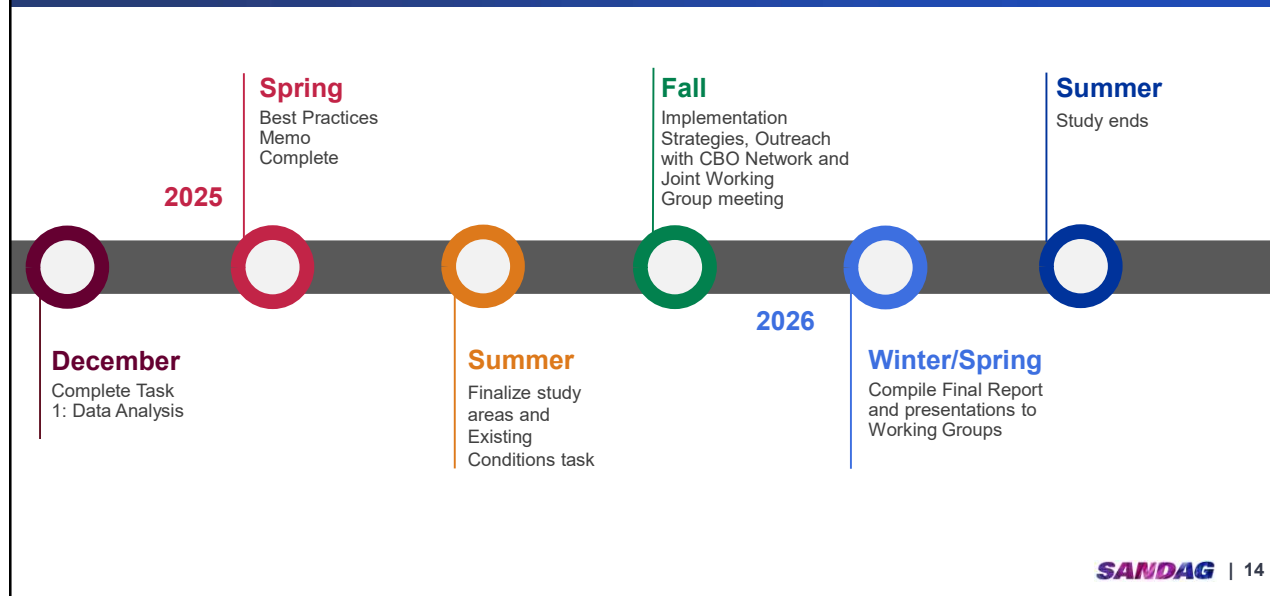
Land Use: Mixed use, Schools, and Multi-Family and Single Family Residential

Safety: Yes, 6 segments

Pop Density: Fairly dense



## Schedule and Next Steps




## Discussion

- What are you most interested on learning about other Reconnecting Communities efforts in San Diego and around the nation?
- What data or examples would be most helpful for you to see at the Joint Working Group to have a productive discussion?

## Stay connected with SANDAG

 Explore our website  
[SANDAG.org](https://SANDAG.org)

 Follow us on social media:  
[@SANDAGregion](#) [@SANDAG](#)

 Email: [elizabeth.havey@sandag.org](mailto:elizabeth.havey@sandag.org)