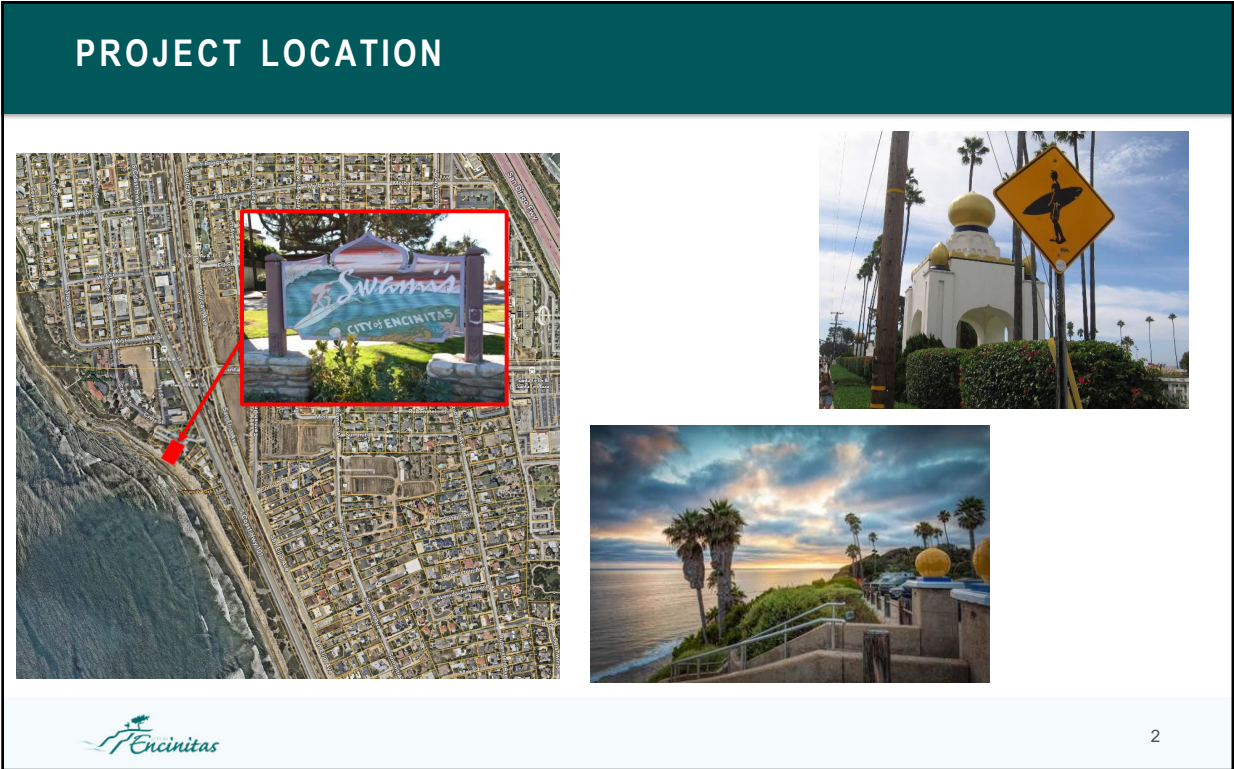




1



2

## PROJECT BACKGROUND & SCOPE OF WORK



- **Originally constructed in 1990**
- **Four main segments**
  - Curved at-grade concrete stairway
  - Glulam beam bridge
  - Three flight timber stair tower
  - Lower concrete staircase & shower
- **Staircase is nearing end of life, unless major capital renovations are made**

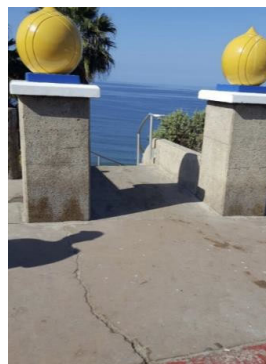


3

3

## PROJECT BACKGROUND & SCOPE OF WORK

- **The proposed capital project may include:**
  - Upgrade galvanized steel hardware with duplex stainless steel
  - Replace structural timber elements in accordance with current Building Code & Coastal Commission Standards
  - Replace portions of the concrete stairway.
  - Investigate and identify accessibility improvements



4

4



## ESTIMATED PROJECT FUNDING & BUDGET



ITEM	COST ESTIMATE
Design	\$150,000
Construction & Contingency	\$654,140
Construction Inspections	\$100,000
<b>TOTAL COST</b>	<b>\$904,140</b>

SOURCE	AMOUNT
City Local Funds	\$800,000
PRBIMF (request)	\$104,140
<b>TOTAL BUDGET</b>	<b>\$904,140</b>



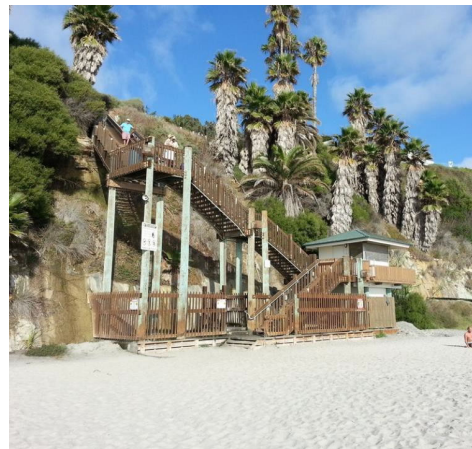
5

5

## PROJECT ELIGIBILITY

### Public Recreational Beach Impact Mitigation Fund

- ✓ Obtain City Council Resolution formally requesting funds (August 13, 2025)
- ✓ Public shorefront recreational improvement to an existing public beach access stairway
- ✓ Large Capital Project with a \$900,000+ budget
- ✓ Project will obtain a Coastal Development Permit through either City of Encinitas's approved Local Coastal Program (LCP) or directly from Coastal Commission.



6

6

## Questions?

