



1

IMPERIAL COUNTY'S RENEWABLE ENERGY

SECOND
Largest Geothermal Energy Producing County in the Nation

2400 MW + (Solar icon)

125 MW + (Geothermal icon)

350 Days of Sunshine Annually


265 MW + (Wind icon)

500 MW + (Hydro icon)

DEVELOPING CLEAN, SUSTAINABLE DOMESTIC ENERGY INDEPENDENCE

2



WHAT IS "LITHIUM VALLEY?"



Imperial County, commonly referred to as Imperial Valley, is located in Southeast California, along the Mexico border. Home to approximately 180,000 residents, Imperial Valley is known for being the winter produce basket of America with its thriving agricultural industry of over \$2.6 Billion annually. The County is also recognized as being the 2nd largest in renewable energy generation by County in the State of California.

In 2023, a Lawrence Berkeley National Lab study conducted in partnership with the US Department of Energy found that there is 18 million+ metric tons of lithium available in the geothermal brine in the region! The area has since been coined "Lithium Valley"



LITHIUM VALLEY IS A COUNTY OF IMPERIAL PROJECT

- Borders the Capital of Baja California, Mexico
- 45 Minutes from Arizona
- 2 Hours from San Diego
- 4 Hours from Los Angeles

3

Traditional Lithium Mining

Catastrophic to the Environment

Evaporation Ponds | Chile

Hard Rock Mining | Australia

Traditionally, lithium mining has predominantly occurred through hard rock mining and evaporation ponds, which are both catastrophic to the environment.

There is NO MINING in Lithium Valley

4



Photo Courtesy of BHE Renewables

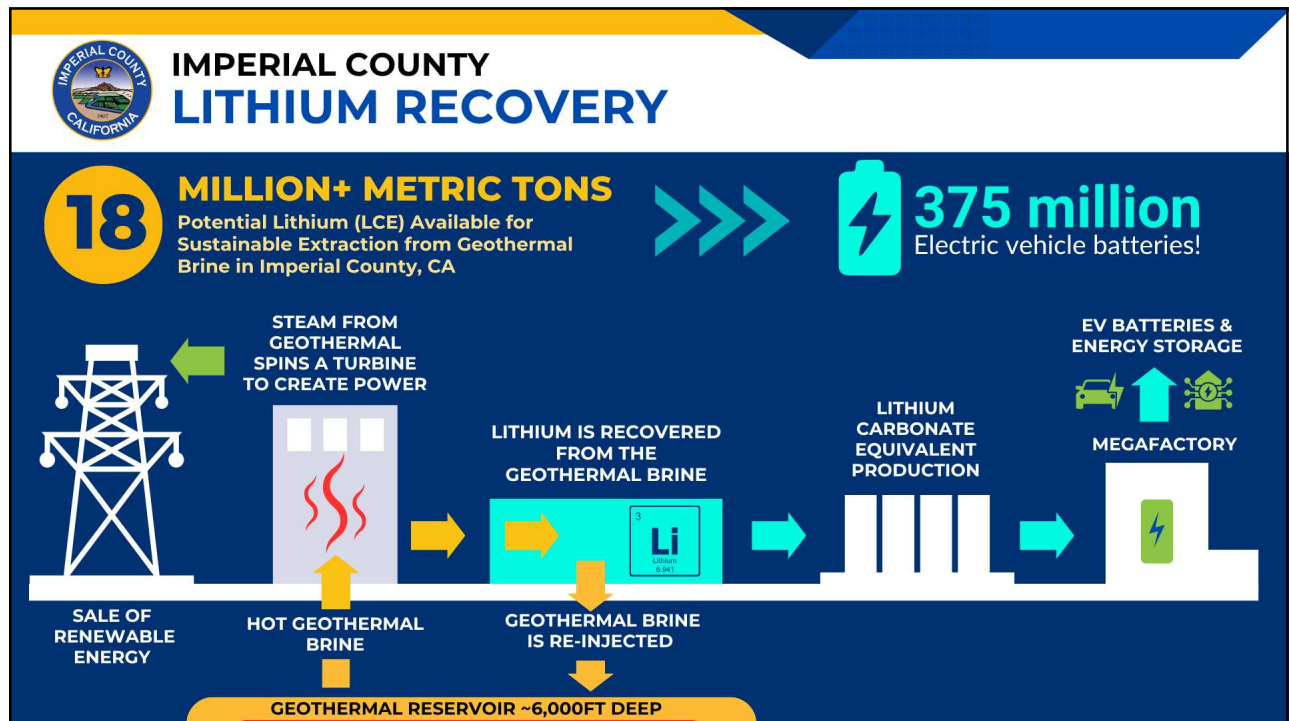
Harvesting Clean Energy in **Harmony with Agriculture**

**SUSTAINABLE LITHIUM
RECOVERED FROM
GEOTHERMAL BRINE**



IMPERIAL COUNTY HAS BEEN PRODUCING GEOTHERMAL ENERGY FOR OVER 40 YEARS!

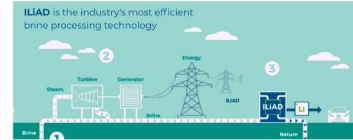
5



6



COMPANIES IN IMPERIAL COUNTY DEVELOPING LITHIUM RECOVERY



BERKSHIRE HATHAWAY ENERGY RENEWABLES IN PARTNERSHIP WITH:



IMPERIAL COUNTY'S LITHIUM VALLEY LEADING THE NATION

IMPERIAL COUNTY IS LEADING THE UNITED STATES IN DEVELOPMENT STATUS TO A BASELOAD ENERGY & DOMESTIC LITHIUM ECOSYSTEM

1 BASELINE REPORT ✓ FEBRUARY 2024	2 INFRASTRUCTURE ASSESSMENT ✓ FEBRUARY 2024	3 LITHIUM TAX FUNDING PLAN ✓ OCTOBER 2024	4 EDUCATION PATHWAYS ✓ SDSU & IVC	5 LV DRAFT SPECIFIC PLAN ✓ FEBRUARY 2025	6 REGIONAL WORKFORCE PLAN 95% NOV 2025	7 LV DRAFT PEIR 95% FALL 2025	8 HEALTH ASSESSMENT 89% FALL 2025	9 LV ECONOMIC ANALYSIS 75% FALL 2025
--	--	--	--	---	---	--	--	---

EDUCATION PATHWAYS



Specific Plan and PEIR



What is a Specific Plan?

A specific plan is a regulatory tool that local governments use to guide development in a localized area. It allows analysis and land use designation to be determined

What is a PEIR?

A programmatic environmental impact report creates a comprehensive CEQA analysis for future development within a Specific Plan area

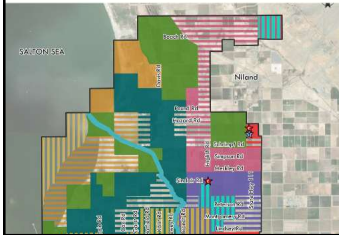


3 YEARS+
PLANNING & ENGAGING

Gov. | Edu. | Industry | Community

Lithium Valley Specific Plan

~51,786-acres



Lithium Valley PEIR

Many CEQA topics are being reviewed including those listed below:

- Aesthetics
- Agriculture/Forestry
- Air Quality
- Biological Resources
- Cultural Resources
- Energy
- Geology/Soils
- Greenhouse Gas Emissions
- Hazards/Hazardous Materials
- Hydrology/Water Quality
- Land Use and Planning
- Mineral Resources
- Noise
- Population and Housing
- Public Services
- Recreation
- Transportation
- Tribal Cultural Resources
- Utilities and Service Systems
- Wildfire
- Mandatory Findings of Significance

Lead Consultants: **RICK and Dudek**

REVIEW THE DRAFT LVSP



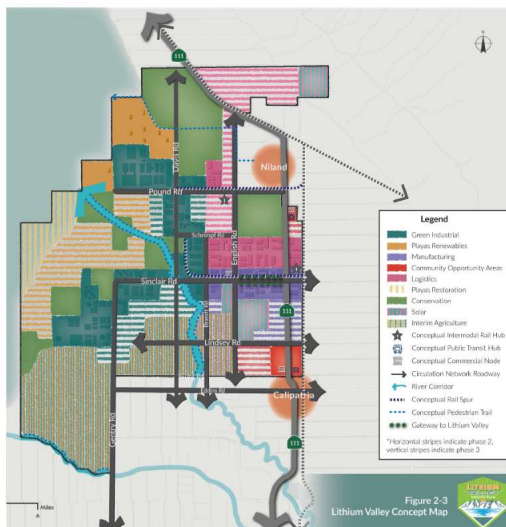
A HARD COPY IS AVAILABLE
AT THE COUNTY PLANNING DEPARTMENT

VIEW ON OUR WEBSITE:

[HTTPS://LITHIUMVALLEY.IMPERIALCOUNTY.ORG/LVSP/](https://lithiumvalley.imperialcounty.org/lvsp/)

9

THE LVSP CREATES LIMITLESS HORIZONS



Lithium, Energy, & Manufacturing Ecosystem UPSTREAM | MIDSTREAM | DOWNSTREAM

Lithium Valley is ideal for many businesses including:

- Battery Manufacturing
- Material Processing
- Recycling of Materials/Waste
- Auto Manufacturing
- Renewable Energy
- Community Spaces
- Data Centers
- Hydrogen Production
- Battery Storage
- Business Services
- Logistics, Rail
- + Future Innovation!



10

DEVELOPMENT STANDARDS

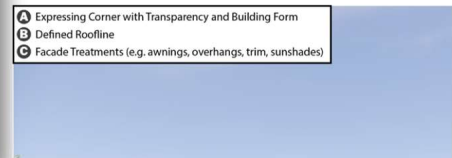
Purpose: Ensure the physical development is consistent in form, quality, and aesthetic.

Table 4-1 General Development Standards

	Green Industrial	Plays Renewables	Manufacturing	Logistics	Community Opportunity Areas	Solar	Plays Restoration Conservation	Floodway
Minimum Lot Size	2 acres	2 acres	1 acre	1 acre	8,000 SF	-	-	-
Minimum Building Setback from Roadway	50'	50'	50'	50'	10'	-	-	-
Minimum Distance Between Buildings	30'	30'	30'	40'	-	-	-	-
Maximum Building Height	80'	80'	80'	80'	40'	20'	-	-
Maximum Utility Structure Height	110'	110'	110'	110'	-	20'	-	-
Maximum Building Lot Coverage	70%	50%	75%	80%	80%	10%	10%	-
Minimum Area for Landscaping and Dust Suppression	15%	20%	10%	10%	10%	-	30%	-



- A Locally inspired architectural motifs/materials
- B Integrate outdoor gathering spaces to provide relief from desert heat
- C Incorporate shading devices such as overhangs, awnings, or canopies
- D Plant drought-tolerant vegetation
- E Defined entrance
- F Repetitive pattern of smaller forms



- A Expressing Corner with Transparency and Building Form
- B Defined Roofline
- C Facade Treatments (e.g. awnings, overhangs, trim, sunshades)

CIRCULATION & TRANSPORTATION

Purpose: Define a transportation network for vehicles, trucks, rail, and non-motorized travel

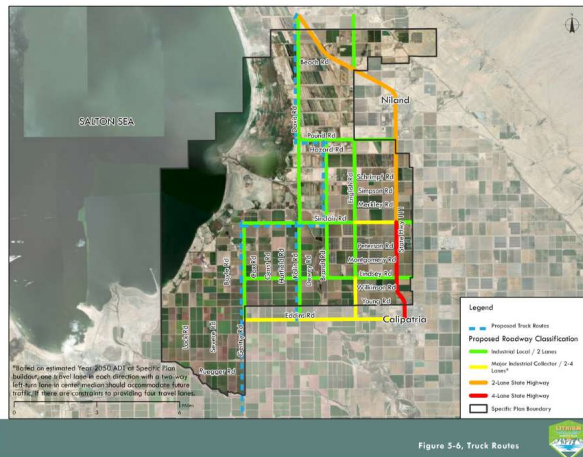


Figure 5-6, Truck Routes



Figure 5-9, Rail Network Alternatives Map

INFRASTRUCTURE

Purpose: Make recommendations to establish critical Bridge infrastructure needs, including water, wastewater, energy, and telecommunications, to support development



Figure 6-4, Drainage Infrastructure Opportunities

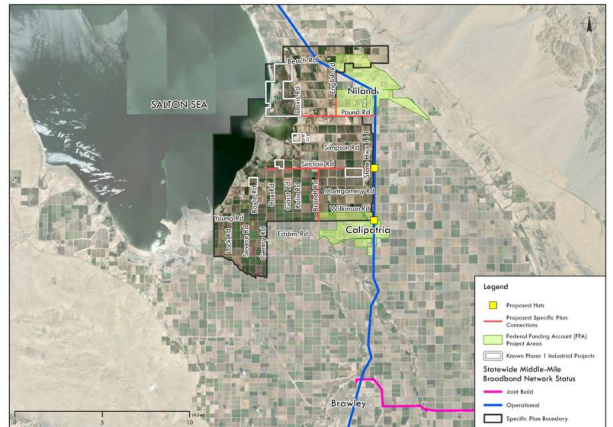


Figure 6-6, Recommended Broadband Network

13

ENGAGEMENT

Lithium Valley Community Engagement Highlights

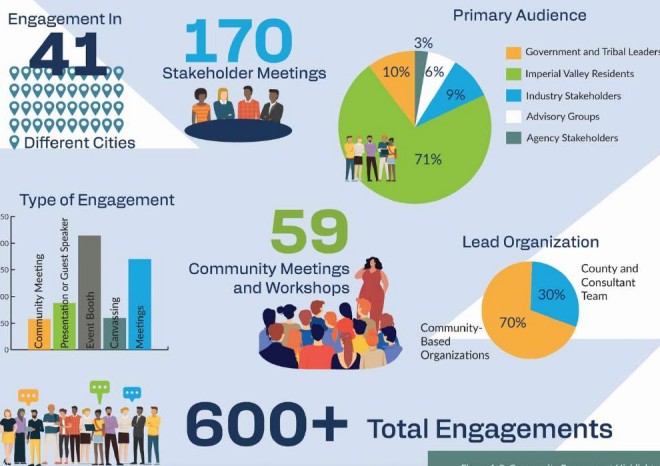


Figure 1-3, Community Engagement Highlights

\$800,000 Awarded

SB125 required that these funds be allocated to local CBO's

\$720,000 Allocated to Community Based Organizations After a 2023 County RFP, \$531,618.93 was distributed to:

- Comite Civico del Valle: \$207,289.22
- IV Equity and Justice: \$148,246.04
- Los Amigos de la Comunidad: \$78,083.67
- Raizes: \$72,000.00
- Imperial Valley LGBT Resource Center: \$26,000.00

A New 2025 County RFP will be Announced Soon!

- The RFP will distribute the remaining \$188,381.07 for additional community engagement on the LVSP and PEIR

\$80,000 Allocated for Engagement with Tribes Who Have Areas of Significance in the LVSP Area



14



LITHIUM VALLEY EXTRACTION THE BEST BENEFITS IN THE INDUSTRY



THERE IS NO OTHER STATE IN THE NATION THAT EXCEEDS THE
LITHIUM COMMUNITY BENEFITS OF IMPERIAL COUNTY, CALIFORNIA



★ **20%** Salton Sea Restoration Fund

★ **80%** County of Imperial

Lifetime Cumulative Metric Tons of Lithium Carbonate Equivalent Extracted	Tax Rate per Metric Ton Extracted
20,000 or less	\$400
20,001 to 30,000	\$600
30,001 and over	\$800



Excise Tax Initiated by County of Imperial



Tax Benefits Shared with Community & Cities



Reinvestment of Tax to Advance Infrastructure



Community Health & Salton Sea Benefits



Geothermal and Mineral Royalty to Landowners



County Managed - Lithium Community Benefits Program



Benefits & Programs are Positive for the Community



De-Risks Development for Industry Co-locating



Beneficial for Industry Applying for Grants/Loans

REMAINING TIMELINE



HELP US BUILD A BETTER TOMORROW!



Discover More
www.LithiumValley.CA



Follow Us
[@County of Imperial](https://www.linkedin.com/company/countyofimperial)



Follow Us
[@ImperialCounty](https://www.facebook.com/ImperialCounty)



Follow Us
[@LithiumValley.CA](https://www.instagram.com/LithiumValley.CA)