

# New Terminal 1 Phase 1A Preview to SANDAG Transportation Committee

NEW  
T1



Matt Harris, Director, Government Relations & Strategy  
San Diego County Regional Airport Authority  
September 5, 2025



1



NEW  
T1

## PLANNING FOR FUTURE GROWTH

2

NEW  
T1

## Planning for Future Growth

- SAN's single runway (not the # of gates) determines capacity
- The marketplace dictates how many people fly
- ~35 million estimated passengers in 2035 (25 million in 2024)
- Recent site improvements have helped to optimize SAN



Circa 2000



3

3

NEW  
T1



# NEW TERMINAL 1

4

NEW  
T1

## New T1 Overall Project Scope



5

NEW  
T1

## Milestones

- November 1, 2021** • New T1 construction began.
- October 2023** • Opening of the new Administration Building.
- August 2024** • First Half of New T1 Parking Plaza opened.
- June 2025** • Second Half of New T1 Parking Plaza opened.
- August 2025** • Opening date for the new airport entrance/on-airport roadway.
- September 2025** • Opening date for Phase 1A - First 19 gates.
- Early 2028** • Opening date for Phase 1B - Balance of 30 gates.
- Mid-2028** • Completion date for Airside Improvements construction.

6

NEW  
T1

## NT1 Notable Features\*



1.2 Million SF of Terminal Space



Outdoor Terrace Overlooking San Diego Bay



Children's Play Area



Expansive Security Checkpoint



30 New Restaurants & Shops



New Airport Access Roadway



New Close-In Parking Structure



Common Use Lounge & Airline Club

\*Full Buildout



7

7

NEW  
T1

## NT1 Sustainability Features\*



Air Quality Improvements



250+ EV Charging Ports (Landside & Airside)



Stormwater Capture & Reuse System



MTS & SAN Flyer Transit Access



Green Building Certifications



100% Carbon-Free Electricity

\*Full Buildout



8

8

NEW  
T1

## MTS Route 992

### Immediate Transit Connection Enhancements

- Current service: MTS Route 992 connects Downtown San Diego with the airport
- Beginning September 23: All airport bus stops for MTS Route 992 will move to new locations for both Terminal 1 & 2
  - Stops will move from the ground level to the center of the elevated departures roadway for easier access to security checkpoints on the second level of each terminal

NEW  
T1

## Assigned Airlines\*

### September 2025:

- MX  **Breeze**  
SERIOUSLY NICE™
- F9  **FRONTIER**  
LOW FARES DONE RIGHT
- B6 **jetBlue**
- WN **Southwest** 
- NK  **spirit**
- SY  **sun country airlines.**

### Early 2026:

- AC  **AIR CANADA**
- WS  **WESTJET**

### Early 2028:

- DL  **DELTA**

\*Subject to change

NEW  
T1

# NT1 Concessions Program



Cutwater Restaurant & Bar  
Novecientos Grados  
SIP Wine & Beer  
The Taco Stand  
JT Bros. Handcrafted Sandwiches  
McDonald's



Market Hall  
Ambrogio 15  
Lofty Coffee  
Better Buzz Coffee  
Luna Grill  
Parfait Paris



Restaurants Opening in September 2025



11

11

NEW  
T1

# NT1 Art - Phase 1a

Seven Public Art Pieces Total with Five Newly Commissioned



*A Day in the Sun*  
• Amy Ellingson



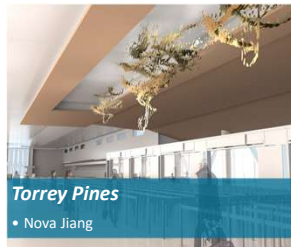
*Rise*  
• Matthew Mazzotta



*Vessel of Light*  
• Erwin Redl



*Migrations*  
• Walter Hood



*Torrey Pines*  
• Nova Jiang



12

12

NEW  
T1

## NT1 Construction Progress



Arrivals Road

GO  
PORT  
LET'S GO.

13

13

NEW  
T1

## Arrivals Curb



GO  
PORT  
LET'S GO.

14

14

NEW  
T1

## East Check-In Pavillion



ORT  
DO.

15

15

NEW  
T1

## Ticketing Hall



16

16

NEW  
T1

## Concourse

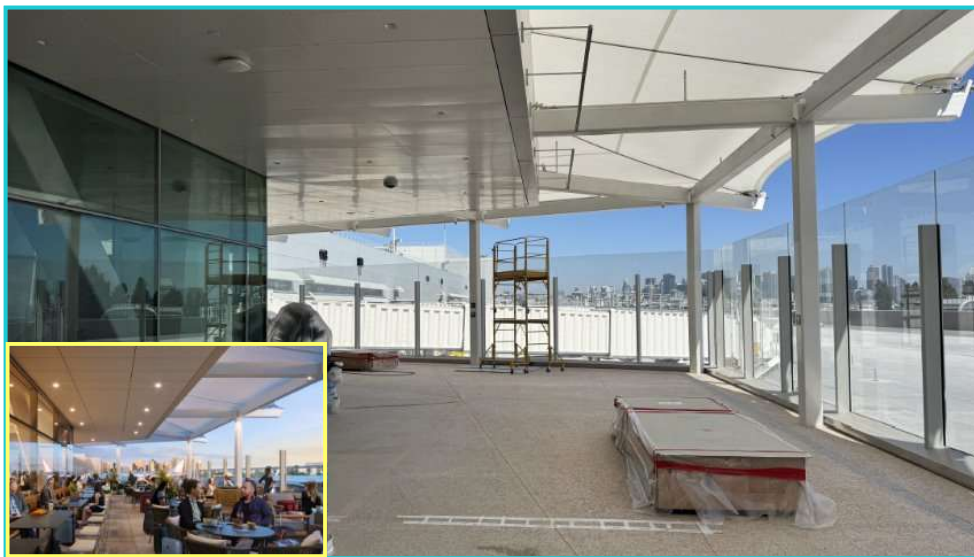


17

17

NEW  
T1

## Outdoor Dining Area



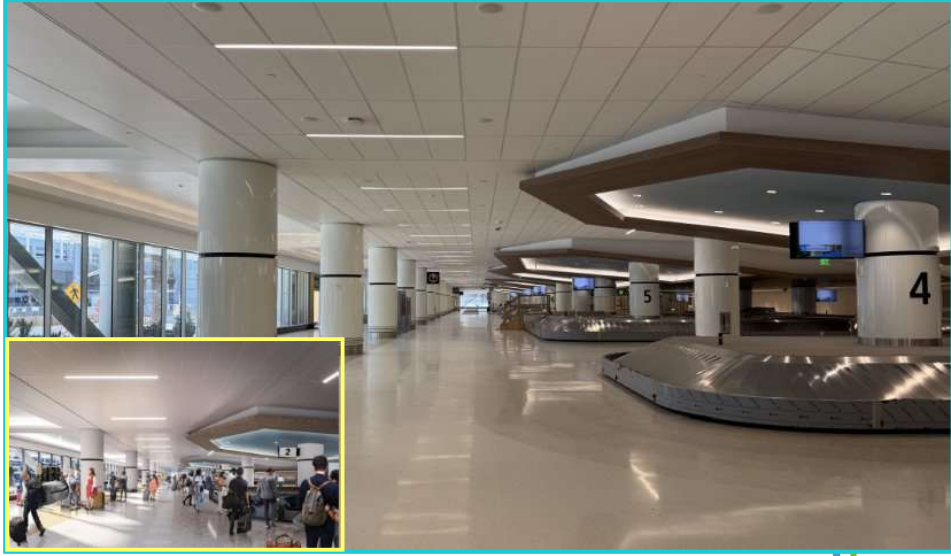
PORT  
LET'S GO.

18

18

NEW  
T1

## Baggage Hall



GO  
RPORT  
LET'S GO.

19

19

NEW  
T1

## Airport Access Roadway



20

20



NEW  
T1

## RECENT & UPCOMING MILESTONES

21

An aerial photograph showing a large, multi-level parking plaza under construction. The concrete structure is visible, with many parking stalls. A road with traffic is in the foreground. The background shows a cityscape and hills under a clear blue sky.

NEW  
T1

## Recent Milestone

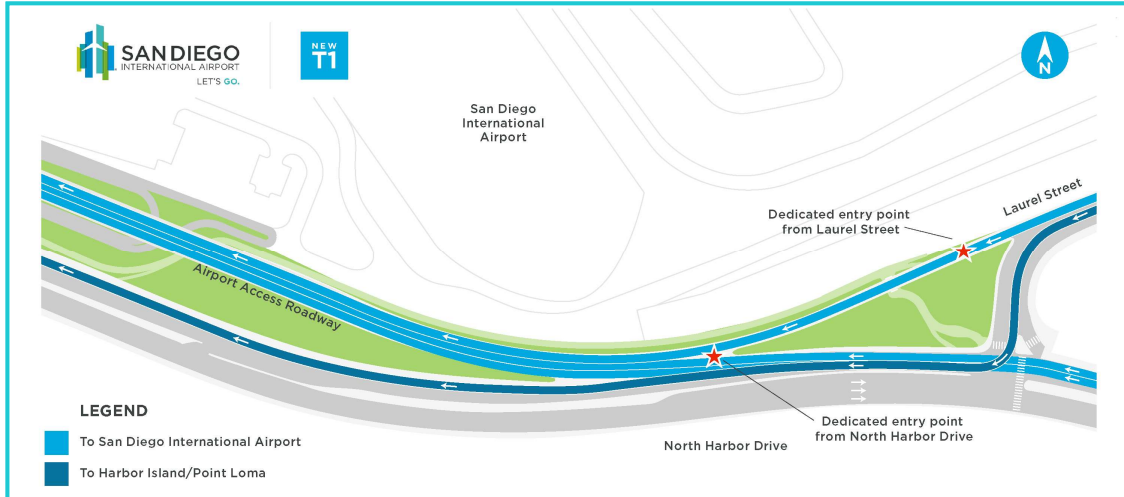
Stage 2 of Terminal 1 Parking Plaza Opened on June 13 (+2,400 stalls)

22

22

NEW  
T1

## Recent Milestone



New On-Airport Access Roadway Opened August 1st

23

23

NEW  
T1

## Off-Airport Improvement Projects



SAN DIEGO INTERNATIONAL AIRPORT  
LET'S GO.

24

24

NEW  
T1

## Upcoming Milestones

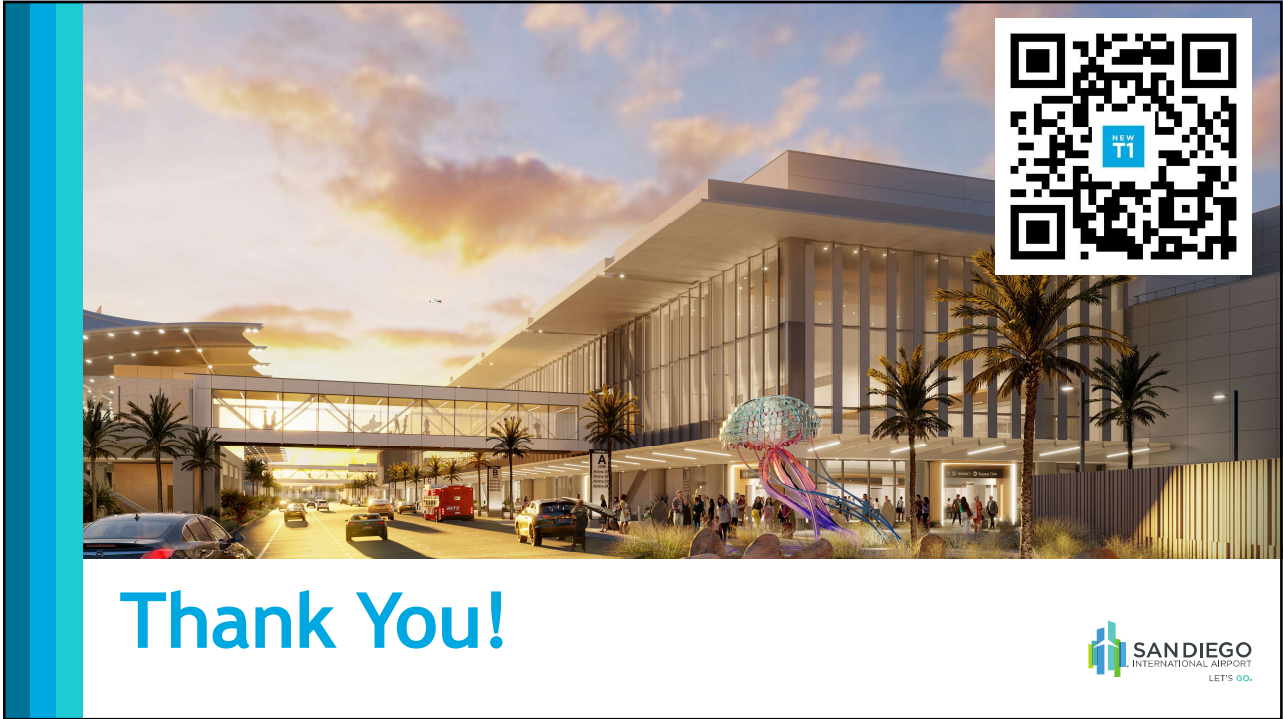
- **Grand Opening of New T1 Phase 1A:**
  - **Evening of September 22:** First flights arrive to the New Terminal 1
  - **Morning of September 23:** First flights depart from the New Terminal 1; first full day of operations

NEW  
T1

## NT1 Community Reveal: Open House

**Sunday, September 14, 2025 (9am to 12pm)**

- Open to the public! No registration required.
- Visitors can drop in anytime for a self-guided tour of the new terminal
- Airport staff will be onsite to answer any questions
- Food samples will be offered by participating concessions
- Parking validation at the NT1 Parking Plaza for up to 3 hours will be available



**Thank You!**

